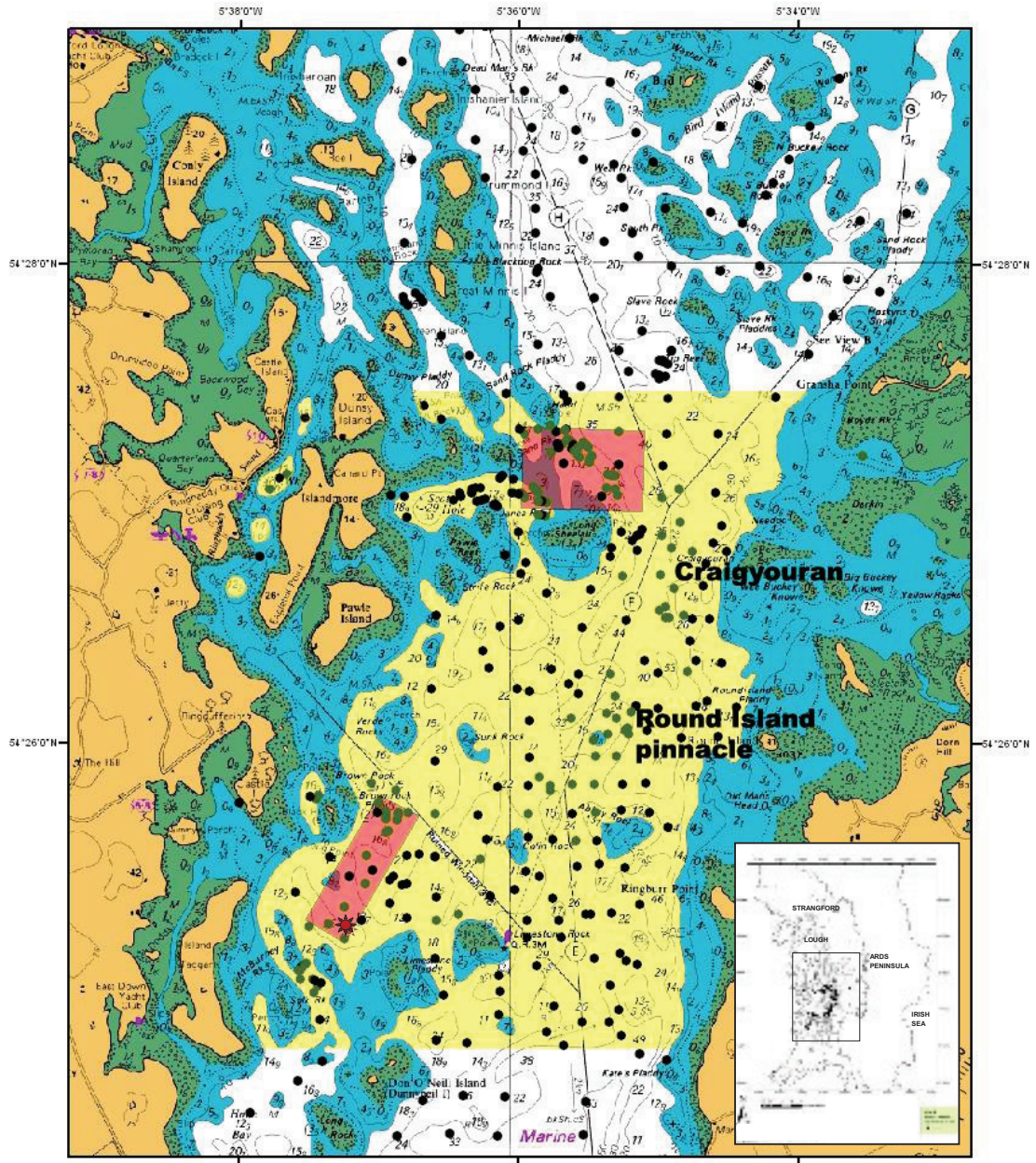


Figure 8.1 Distribution of *Modiolus modiolus* in Strangford Lough in 2010 based on surveys conducted by the Modiolus Restoration Research Group (Inset). *M. modiolus* reefs were recorded at 123 of 442 sites surveyed and is the basis of the recommendation to establish a total protection zone below the 10m depth contour, between Castle Island to Gransha Point in the North and the Southern tip of Island Taggart to Kate's Pladdy in the South (Main figure). The recommendation aims to meet the first objective of the Modiolus Restoration Plan agreed by DOE and DARD: ***'to identify, map and introduce total protection for the remaining Modiolus biogenic reef sites within 1 year of the adoption of this plan'***.

The position of 'good' condition sites, at Craigyouran and Round Island Pinnacle are indicated

The experimental cultch site and the Strangford Lough (Sea Fisheries Exclusion Zones) Regulations (Northern Ireland) 2011 No. 36, Introduced 14th March 2011 are also illustrated.



	Proposed <i>M. modiolus</i> protected area
	Sea Fisheries Exclusion Zones March 2011
	Experimental <i>M. modiolus</i> reef site
	MRRG survey records (2008-2010)
	<i>M. modiolus</i> present
	<i>M. modiolus</i> absent

Disclaimer:
 This product has been derived in part from material obtained from the UK Hydrographic Office with the permission of the Controller of Her Majesty's Stationary Office and UK Hydrographic Office (www.ukho.gov.uk). 'NOT TO BE USED FOR NAVIGATION'