

# EAST DOWN YACHT CLUB

## OFFICERS:

Commodore	Malcolm Beatty
Vice-Commodore	Michael Bell
Hon Secretary	Gloria Livingston
Rear-Commodore Sailing	David Maxwell
Sailing Captain	Don Howes

## REGATTA

Saturday 14 August 2010

First start: 1230 hrs

High Water Killyleagh: 1705 hrs BST

### Supplementary Sailing Instructions

#### 1. NOTICE

These Supplementary Sailing Instructions also available on the EDYC website (<http://www.edyc.co.uk/>) shall be read in conjunction with the Notice of Races and General Sailing Instructions for Strangford Lough Regattas 2010 as published on its website (<http://www.strangfordloughregattas.co.uk/index-4.html>).

#### 2. SIs TO BE CHANGED FROM THE SLRC SIs 2010:

- a. 9.1 Protests: Written Protests together with a fee of £20.00 shall be lodged with personnel at the kitchen of the EDYC clubhouse who will register the time of receipt. The time limit for protests is one hour after the finish time of the last boat in the relevant class. The fee will be forfeited if the protest is deemed frivolous.
- b. 11 Time Limit: specification – any yacht not finishing by 1700 hrs shall be deemed to have retired.

#### 3. START

The starting line shall be between the Committee Boat and a yellow buoy Mark “S” (letter “S” in black). A limit mark may be laid at near the Committee Boat end of the starting line and yachts shall pass between this mark and the yellow buoy Mark “S”.

#### 4. FINISH

Normally a separate line from the Starting Line and between the Committee boat and a yellow buoy Mark “F” (letter “F” in black). A limit mark may be laid at or near the Committee Boat and yachts shall pass between this and the yellow buoy Mark “F”.

**5. INTERVENING ROUNDS**

All competitors shall pass between the Committee Boat including any limit mark and yellow buoy Mark “F”.

**6. COURSE DETAILS AND METHOD OF DISPLAY**

Courses shall be displayed on boards from the Committee Boat. The appropriate course code for each class is specified in the table of start times for classes attached to these SSIs.

The boards will be ordered as follows:

Reading from left to right

Course code letter

Marks to be rounded – red numbers leave mark to Port, green numbers leave mark to Starboard.

Number of rounds to be sailed – black number on a white background

**All boats shall keep to seaward of Mark 2 and Mark 6 unless displayed as a mark of that course.**

**All boats shall pass North of Mark “K” off Skate Rock.**

**7. PROVISION FOR SHORTENING COURSES**

By flying Code Flag “S” above the class code flag at the beginning of the round to be shortened and displaying the new course on the course board. The finishing line shall normally be between the Committee Boat including any inner mark and yellow buoy Mark “F”, however races may be finished at any mark of the course by a boat flying a blue flag with the appropriate class flag/s and with suitable sound signals.

**8. VALIDITY OF RACES**

A race shall be valid if two or more yachts start correctly in a scheduled race. Any yachts not catered for under SLRC SI 12 and for which there is no scheduled class are invited to compete in the appropriate scheduled handicap class upon declaring their intention and handicap to the Race Officer before the start of the race.

**9. PRIZES**

A prize shall be awarded to the winning yacht in each valid race.

**10. UPDATES**

Changes to the Supplementary Sailing Instructions may be made up to one hour prior to the start of each class and shall be posted on the EDYC notice board.

**11. INSTRUCTIONS TO SAFETY AND RESCUE CREWS**

Safety boats should liaise with the EDYC Safety Officer on the Committee Boat prior to commencement of racing at 1230 hrs using VHF channel 37.

## **INFORMATION:**

### **Prizegiving and refreshments:**

All competitors and their families are invited to refreshments in the EDYC Clubhouse after racing, followed by the award of prizes. Visitors are most welcome to join members for the evening entertainment.

### **Ferrying:**

After racing safety boats are requested to assist in ferrying crew to and from the EDYC Club pontoon and yachts, where possible.

### **Race Programme, class flags and Course Codes:**

See page 4

### **Chart of Marks, showing approximate position:**

See page 5

# EAST DOWN YACHT CLUB

## OFFICERS:

Commodore	Malcolm Beatty
Vice-Commodore	Michael Bell
Hon Secretary	Gloria Livingston
Rear-Commodore Sailing	David Maxwell
Sailing Captain	Don Howes

Tel: 44 828 375

<http://www.edyc.co.uk/>

## REGATTA

Saturday 14 August 2010

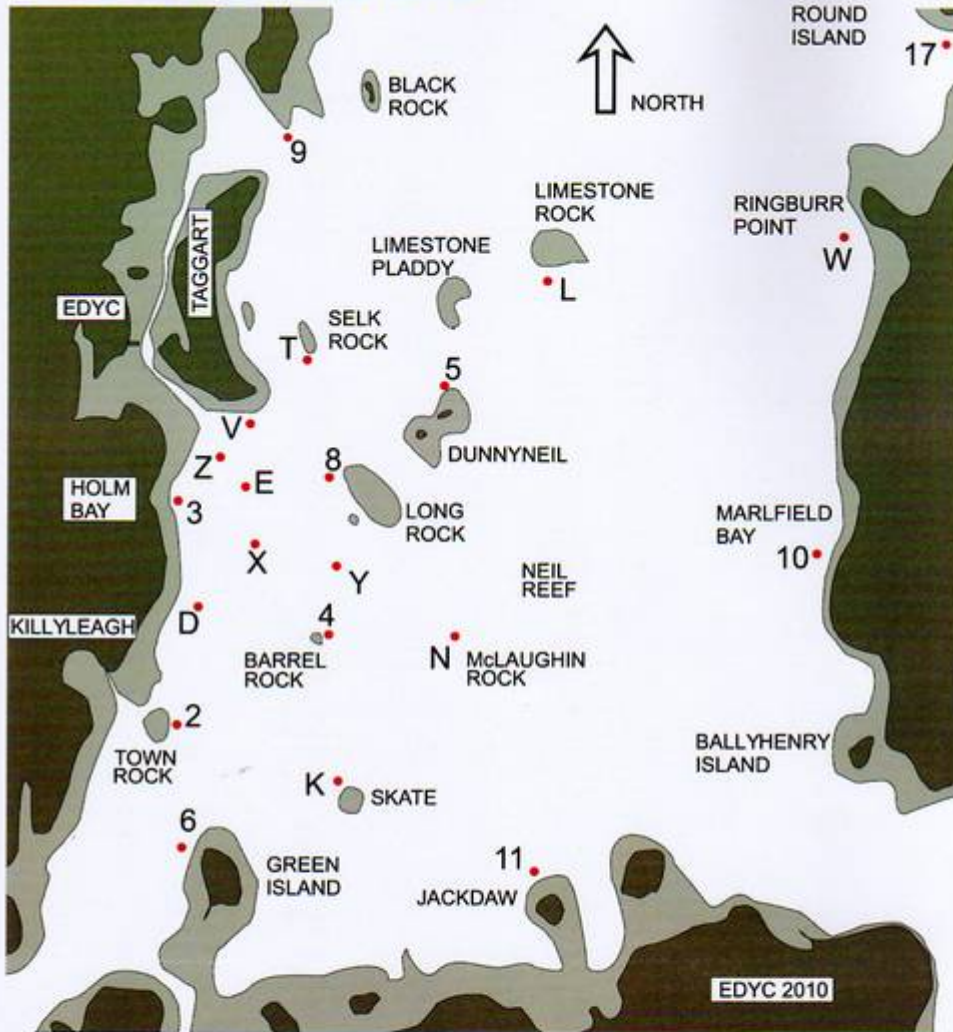
First start: 1230 hrs

High Water Killyleagh: 1705 hrs BST

*Amended table of classes (17 June 2010)*

RACE PROGRAMME, CLASS FLAGS AND COURSE CODES				
Race No	Start	Class	Class Flag	Course code letter
1	1230	Cruiser IRC 0.950 & over	Numeral 1	A
2	1235	Cruiser PYS 1030 & under	Numeral 4	B
3	1235	Cruiser IRC 0.049 & under	Numeral 2	B
4	1240	Flying Fifteen	A	C
5	1245	Cruiser PYS 1031-1080	Numeral 5	C
6	1250	Sonata	Numeral 6	C
7	1255	River	R	C
8	1300	Glen	G	C
9	1305	Cruiser PYS Restricted Sail	Numeral 3	C
10	1310	Lightning	D	D
11	1315	Squib	E	D
12	1320	Cruiser PYS 1081 & over	K	D
13	1325	Leisure 17	B	E
14	1330	Wayfarer	W	E
15	1335	Dinghy Handicap PYS 1130 & under	J	E
16	1340	Dinghy Handicap PYS 1131 & over	V	F
17	1345	Topper	T	F

## POSITION OF CLUB RACING MARKS



This sketch is intended only to indicate the approximate normal location of the racing marks used by EDYC. It is not suitable for navigation purposes and is not to scale.

A download of this sketch is available from [www.edyc.co.uk](http://www.edyc.co.uk)

Moynore | Killyleagh | Downpatrick  
BT30 9QZ,  
Co Down

Clubhouse telephone | 028 4482 8375

[www.edyc.co.uk](http://www.edyc.co.uk)

[info@edyc.co.uk](mailto:info@edyc.co.uk)

2010 MEMBERS HANDBOOK



EAST DOWN YACHT CLUB